

WCEX-ABTS

V2X application bench test system

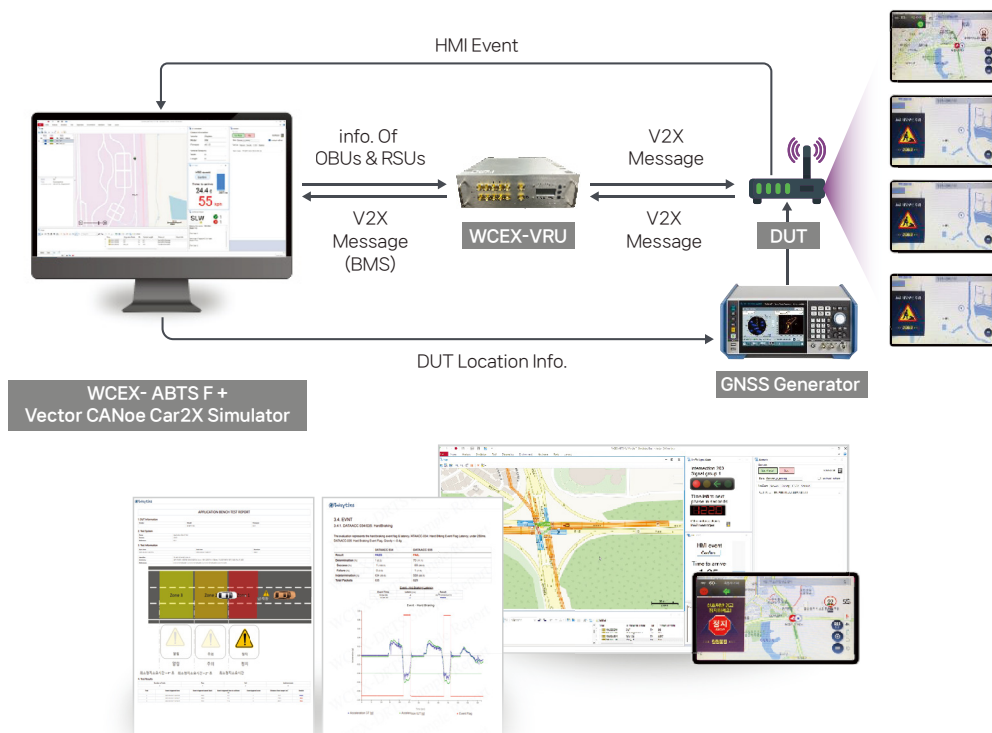
WCEX-ABTS supports functionality and performance testing of C-ITS services in a laboratory environment. It simulates real-time message transmission between RSUs (Roadside Units) and OBUs (On-Board Units) in a virtual real road environment, verifying and analyzing interactions in various traffic scenarios and situations. WCEX-ABTS provides an accurate and reliable testing environment, making it an essential tool for the development and verification of next-generation transportation systems.

Features

- * Simulation of field V2X environment in laboratory facilities
- * Generation of V2X messages (BSM, SPaT, MAP, TIM, etc.) and GNSS signals

Scenarios

- * Red Light Violation Warning (RLVW)
- * Forward collision Warning (FCW)
- * Road Work Warning
- * Disaster Information Warning (DIW)
- * Pedestrian collision Warning



WCEX- ABTS F +
Vector CANoe Car2X Simulator

Titles	Spec
V2X Radio Standard	DSRC, C-V2X(3GPP PC5 Rel.14)
V2X Application Test Standard	KR(ITSK-00137-6), EU(Car-2-Car), US & China(TBD)
V2X Message Set Standard	KR(KS R 1600), US(SAE J2735), EU(ETSI ITS), China(TBD)
V2X Message Security	IEEE 1609.2 bundle certificate support
Application Test Type	V2V,V2I,V2P
Realtime GNSS Control	Various GNSS simulator protocol support
In-vehicle Signal Stimulus	User customizable SOME/IP, CAN stimulation support
Unit I/O Port	V2X Main & Sub Antenna pairs : 5 , GNSS Antenna In : 1, 1PPS Out : 1, Ethernet : 1
Power Consumption	110V / 220VAC 1.8A Max
V2X Proxy Unit Size	216 x 82 x 310.3 (W x H x D, mm)